

*“A **Knowledgeable** and **Compassionate** partner”*



# CMS ResDAC Data Review & Trending

**Joel VanEaton, BSN, RN, RAC-CTA, Master Teacher:**  
Executive Vice President of PAC Regulatory Affairs and Education

**Joe Eaton, RAC-CT:** Chief Strategist



# APPROVAL STATEMENT DISCLOSURE

- This nursing continuing professional development activity was approved by Broad River Rehab, an accredited approver by the American Nurses Credentialing Center's Commission on Accreditation.
- This course has been approved for 1 contact hours.

# CONFLICT OF INTEREST DISCLOSURE

- Broad River Rehab is not charging for this educational offering and has no financial or other conflicts of interest regarding this program.

# SUCCESSFUL COMPLETION REQUIREMENTS

- **Live, in-person**
  - In order to obtain nursing contact hours, you must attend the entire activity, participate in case study analysis, and complete the evaluation.
- **Live, virtual**
  - In order to obtain nursing contact hours, you must participate in the entire program, participate in audience polling and/or Q&A and complete the evaluation.
- **Web-Based/On-Demand**
  - In order to obtain nursing contact hours, you must view the entire program, and complete the evaluation.

# DISCLOSURE OF THE EXPIRATION DATE FOR AWARDING CONTACT HOURS FOR ENDURING PROGRAMS

- Contact hours for this program will not be awarded after August 21, 2022





# Learning Objectives

## CMS ResDAC Data Review & Trending

As a result of this presentation the participant will be able to...

- 1. Define data points and purpose of CMS Research Data Assistance Center (ResDAC)
- 2. Explain current and prior shifts in HIPPS code trends since the implementation of PDPM
- 3. Describe integration of data into the RAI Process including importance of coding accuracy

# CMS ResDAC Data Review & Trending

## Today's Agenda

### ➤ **ResDAC:**

What is it? How do you use it?

### ➤ **HIPPS codes:**

How are they changing?

### ➤ **Coding:**

How should data inform the coding process?

# ResDAC Data

- Medicare and Medicaid data
- Research Identifiable Files (RIF)
- Standard Analytical Files (SAF)
- Medicare Provider Analysis and Review (MEDPAR)
- Much More



<https://resdac.org>

# Questions we CAN answer with ResDAC

Length of  
Stay

ICD-10  
Codes Used

HIPPS  
Analysis

DRG Codes  
coming from  
hospitals

Discharge  
patterns

Readmission  
Patterns

MUCH More



# Questions we CAN'T answer with ResDAC

How many therapy minutes are being provided under PDPM?

Have outcomes improved or declined under PDPM?

Anything related to PHQ-9, other than depression for clinically complex and special care. (More on this later.)

Anything related to the BIMs

**Anything related to Managed Care**

# HIPPS Analysis

SAF Data includes HIPPS codes for EVERY stay

For example:

PT/OT – Medical  
Management with 6-9  
GG Score

JCEC1

```
graph TD; JCEC1 --> NTA[6-8 NTA Points]; JCEC1 --> Special[Special Care High – No Depression]; JCEC1 --> SLP[SLP – Both Mechanically Altered Diet & Swallow Disorder/ No Acute Neuro, Comorbidities or Cognitive Impairment]; JCEC1 --> PTOT[PT/OT – Medical Management with 6-9 GG Score];
```

6-8 NTA Points

Special Care High –  
No Depression

SLP – Both Mechanically Altered Diet & Swallow Disorder/  
No Acute Neuro, Comorbidities or Cognitive Impairment

HIPPS	Discipline	CMI	Pay
J	PT	1.4200	\$87.78
	OT	1.4500	\$82.32
C	SLP	2.6700	\$68.11
E	Nursing	1.9900	\$179.73
C	NTA	1.8400	\$125.36
Non-Case-Mix			\$86.22
<b>Total (1-3)</b>			<b>\$880.25</b>
<b>Total (4-20)</b>			<b>\$629.52</b>

# Admission & Discharge Trends

AKA – Our agreement with ResDAC

## BON SECOURS ST MARYS HOSPITAL

5801 BREMO RD  
RICHMOND, VA

★★★★

Part A Discharges			
	Q4 2020	Q1 2021	Total
To SNFs	167	187	354
Overall	1,418	1,444	2,862

### WESTPORT REHABILITATION AND NURSING CENTER

7300 FOREST AVE

RICHMOND, VA (1.9 miles)

ReAdm: 18% (1,700<sup>th</sup>)

\$19,586.1/stay

★  
ALOS: 25 >

\$783.44/day

Q4: 12	Q1: 26	Total: 38
--------	--------	-----------

### GLENBURNIE REHAB & NURSING CENTER

1901 LIBBIE AVE

RICHMOND, VA (0.5 miles)

ReAdm: 20.5% (7,435<sup>th</sup>)

\$20,374.56/stay

★  
ALOS: 24 >

\$848.94/day

Q4: 22	Q1: 15	Total: 37
--------	--------	-----------

### BETH SHOLOM HOME OF VIRGINIA

1600 JOHN ROLFE PARKWAY

RICHMOND, VA (6.9 miles)

ReAdm: 16.1% (1<sup>st</sup>)

★  
ALOS: 31





# CMS ResDAC Data Review & Trending

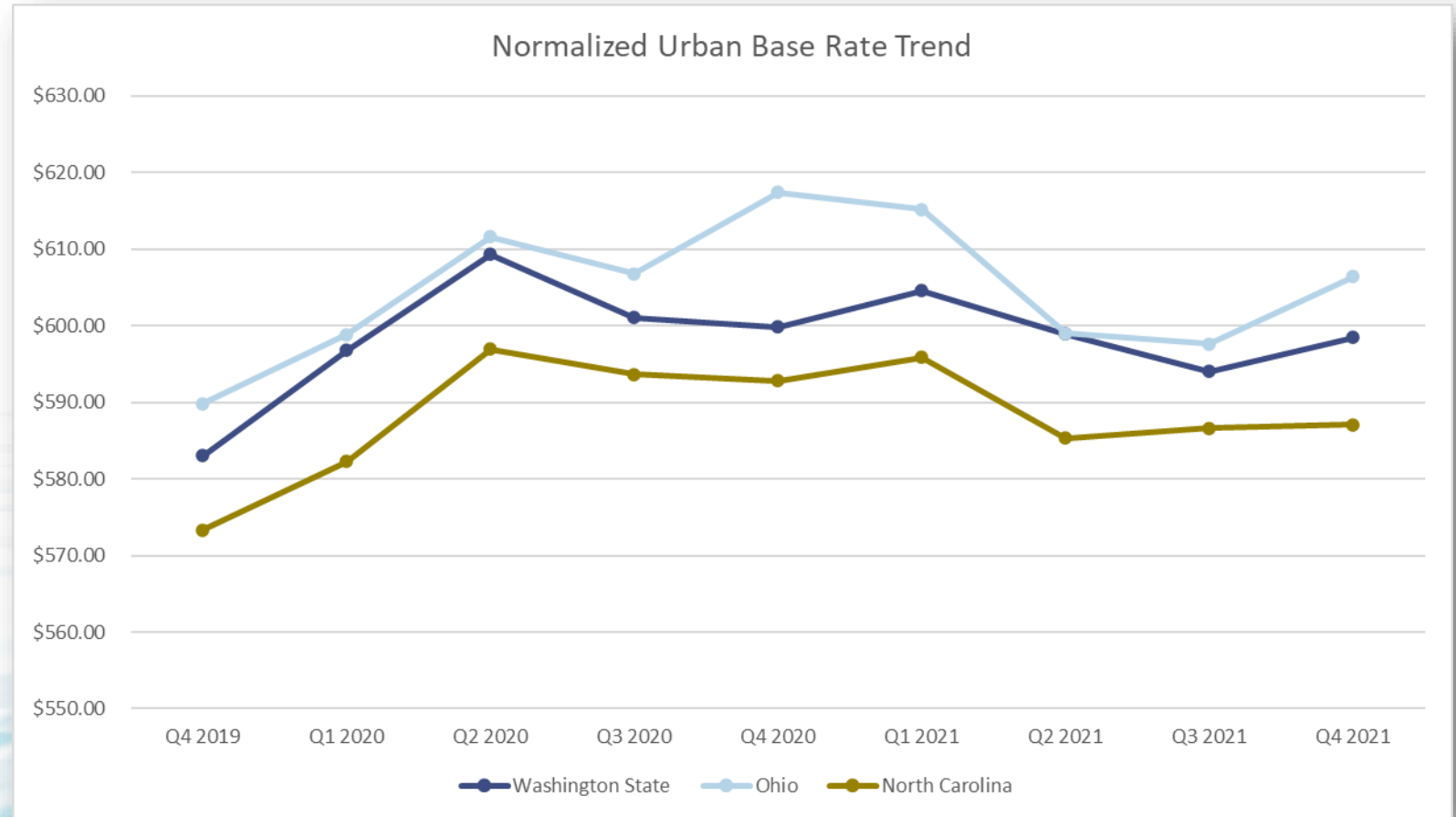
## FY 2022 PDPM Categories with CMI and Rates

**TABLE 6: PDPM Case-Mix Adjusted Federal Rates and Associated Indexes—URBAN**

PDPM Group	PT CMI	PT Rate	OT CMI	OT Rate	SLP CMI	SLP Rate	Nursing CMG	Nursing CMI	Nursing Rate	NTA CMI	NTA Rate
A	1.53	\$96.11	1.49	\$87.14	0.68	\$15.95	ES3	4.06	\$444.61	3.24	\$267.69
B	1.70	\$106.79	1.63	\$95.32	1.82	\$42.68	ES2	3.07	\$336.20	2.53	\$209.03
C	1.88	\$118.10	1.69	\$98.83	2.67	\$62.61	ES1	2.93	\$320.86	1.84	\$152.02
D	1.92	\$120.61	1.53	\$89.47	1.46	\$34.24	HDE2	2.40	\$262.82	1.33	\$109.88
E	1.42	\$89.20	1.41	\$82.46	2.34	\$54.87	HDE1	1.99	\$217.92	0.96	\$79.32
F	1.61	\$101.14	1.60	\$93.57	2.98	\$69.88	HBC2	2.24	\$245.30	0.72	\$59.49
G	1.67	\$104.91	1.64	\$95.91	2.04	\$47.84	HBC1	1.86	\$203.69	-	-
H	1.16	\$72.87	1.15	\$67.25	2.86	\$67.07	LDE2	2.08	\$227.78	-	-
I	1.13	\$70.99	1.18	\$69.01	3.53	\$82.78	LDE1	1.73	\$189.45	-	-
J	1.42	\$89.20	1.45	\$84.80	2.99	\$70.12	LBC2	1.72	\$188.36	-	-
K	1.52	\$95.49	1.54	\$90.06	3.7	\$86.77	LBC1	1.43	\$156.60	-	-
L	1.09	\$68.47	1.11	\$64.91	4.21	\$98.72	CDE2	1.87	\$204.78	-	-
M	1.27	\$79.78	1.30	\$76.02	-	-	CDE1	1.62	\$177.41	-	-
N	1.48	\$92.97	1.50	\$87.72	-	-	CBC2	1.55	\$169.74	-	-
O	1.55	\$97.37	1.55	\$90.64	-	-	CA2	1.09	\$119.37	-	-
P	1.08	\$67.85	1.09	\$63.74	-	-	CBC1	1.34	\$146.74	-	-
Q	-	-	-	-	-	-	CA1	0.94	\$102.94	-	-
R	-	-	-	-	-	-	BAB2	1.04	\$113.89	-	-
S	-	-	-	-	-	-	BAB1	0.99	\$108.41	-	-
T	-	-	-	-	-	-	PDE2	1.57	\$171.93	-	-
U	-	-	-	-	-	-	PDE1	1.47	\$160.98	-	-
V	-	-	-	-	-	-	PBC2	1.22	\$133.60	-	-
W	-	-	-	-	-	-	PA2	0.71	\$77.75	-	-
X	-	-	-	-	-	-	PBC1	1.13	\$123.75	-	-
Y	-	-	-	-	-	-	PA1	0.66	\$72.28	-	-

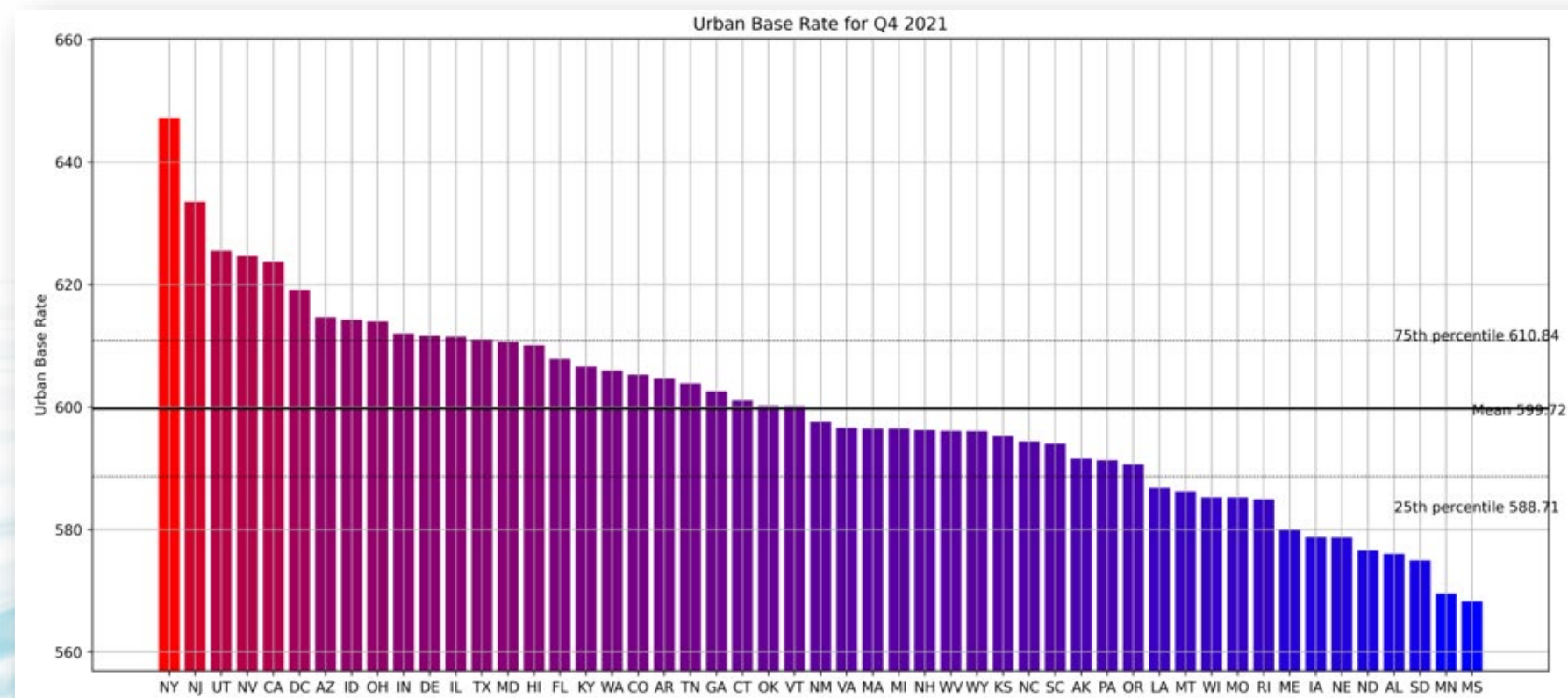
# CMS ResDAC Data Review & Trending

## PDPM Rate Trends Through Q4 2021



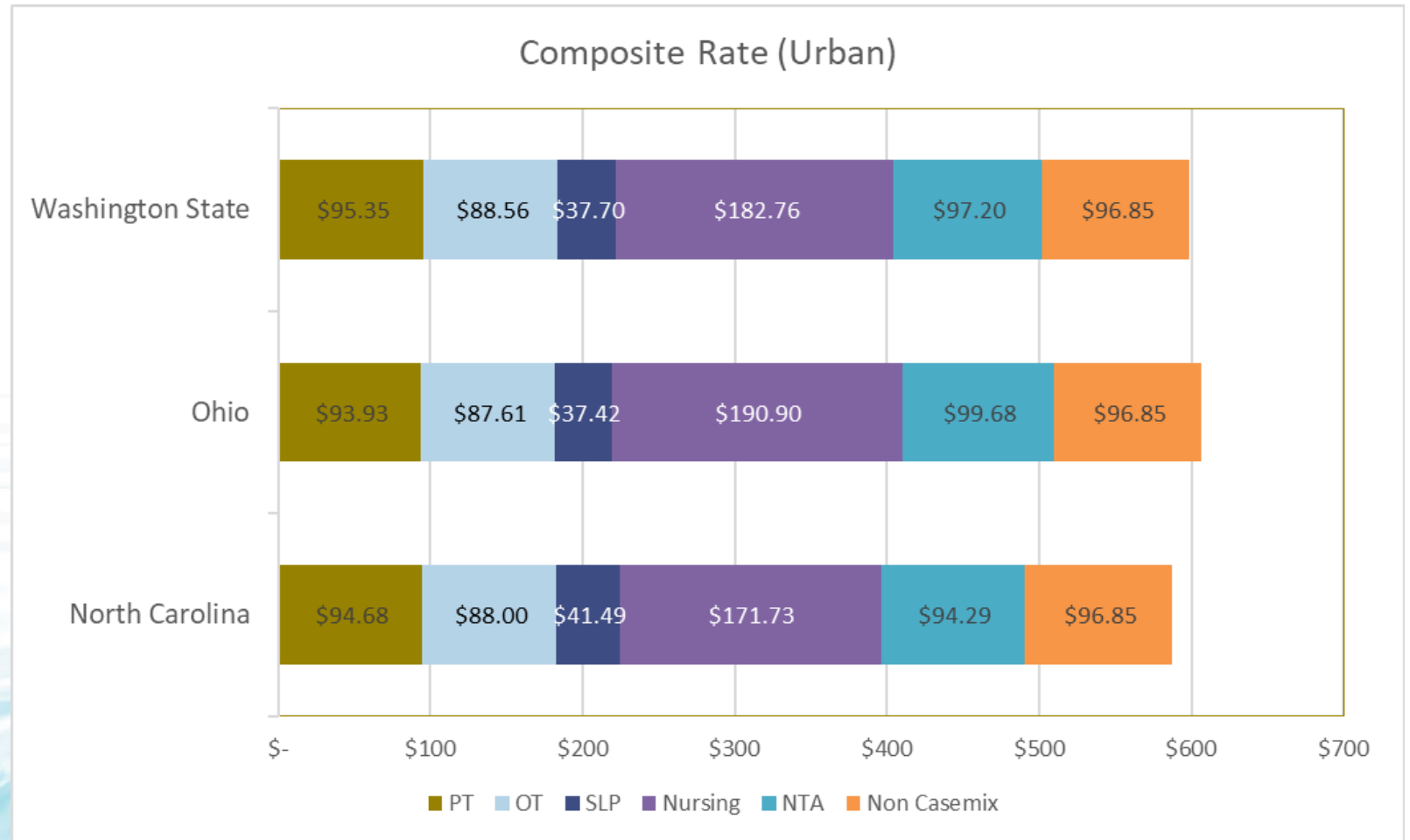
# CMS ResDAC Data Review & Trending

## PDPM Urban Base Rate by State Q4 2021



# CMS ResDAC Data Review & Trending

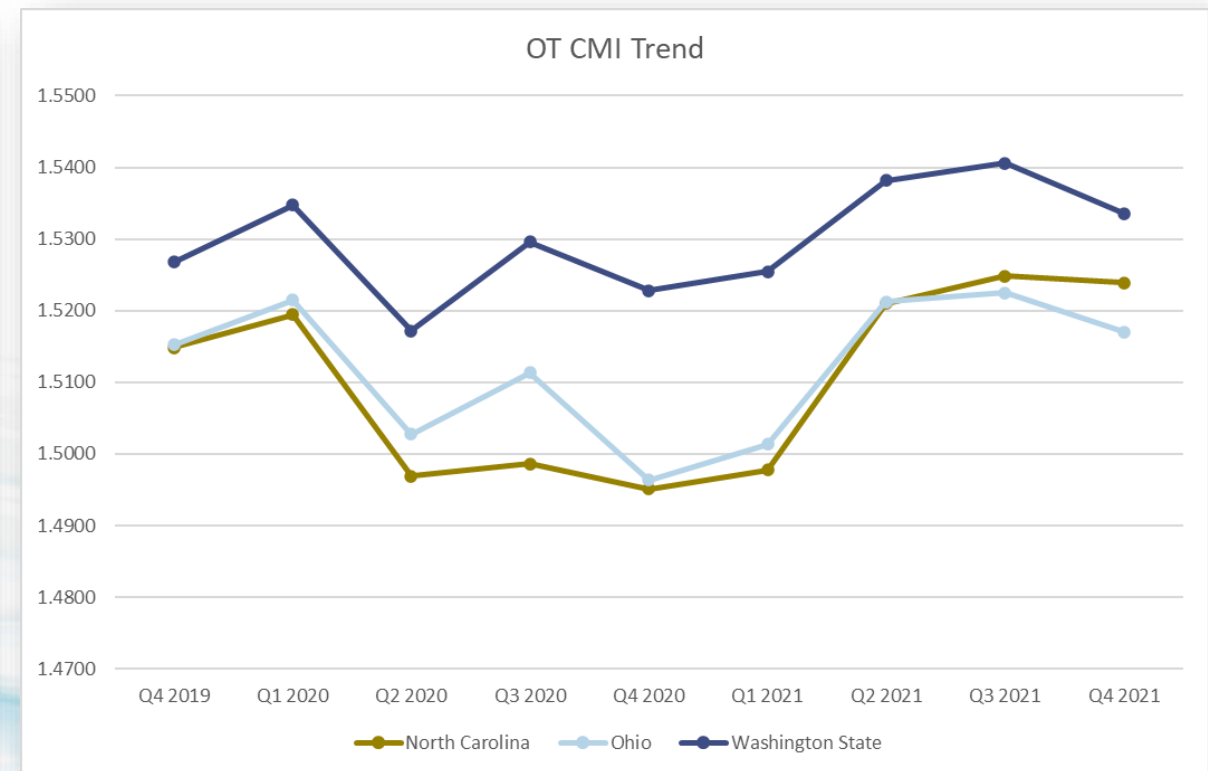
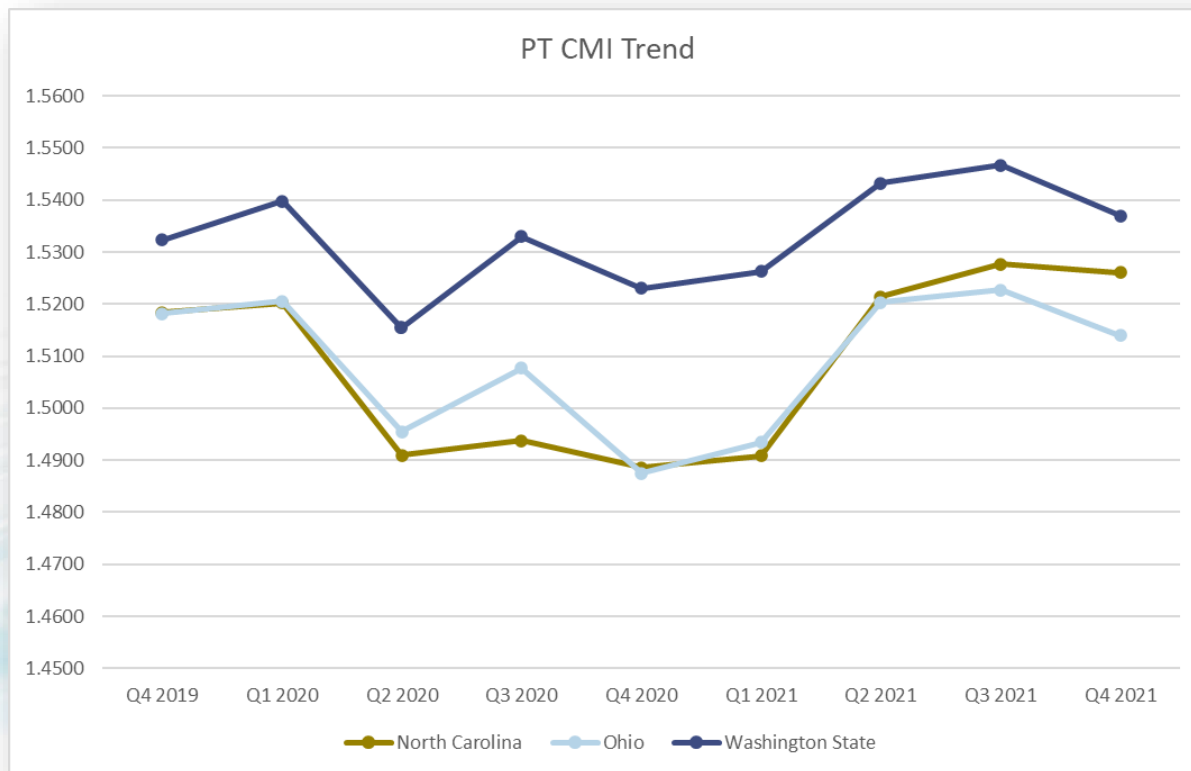
## Rate Breakdown by Category Q4 FY 2021





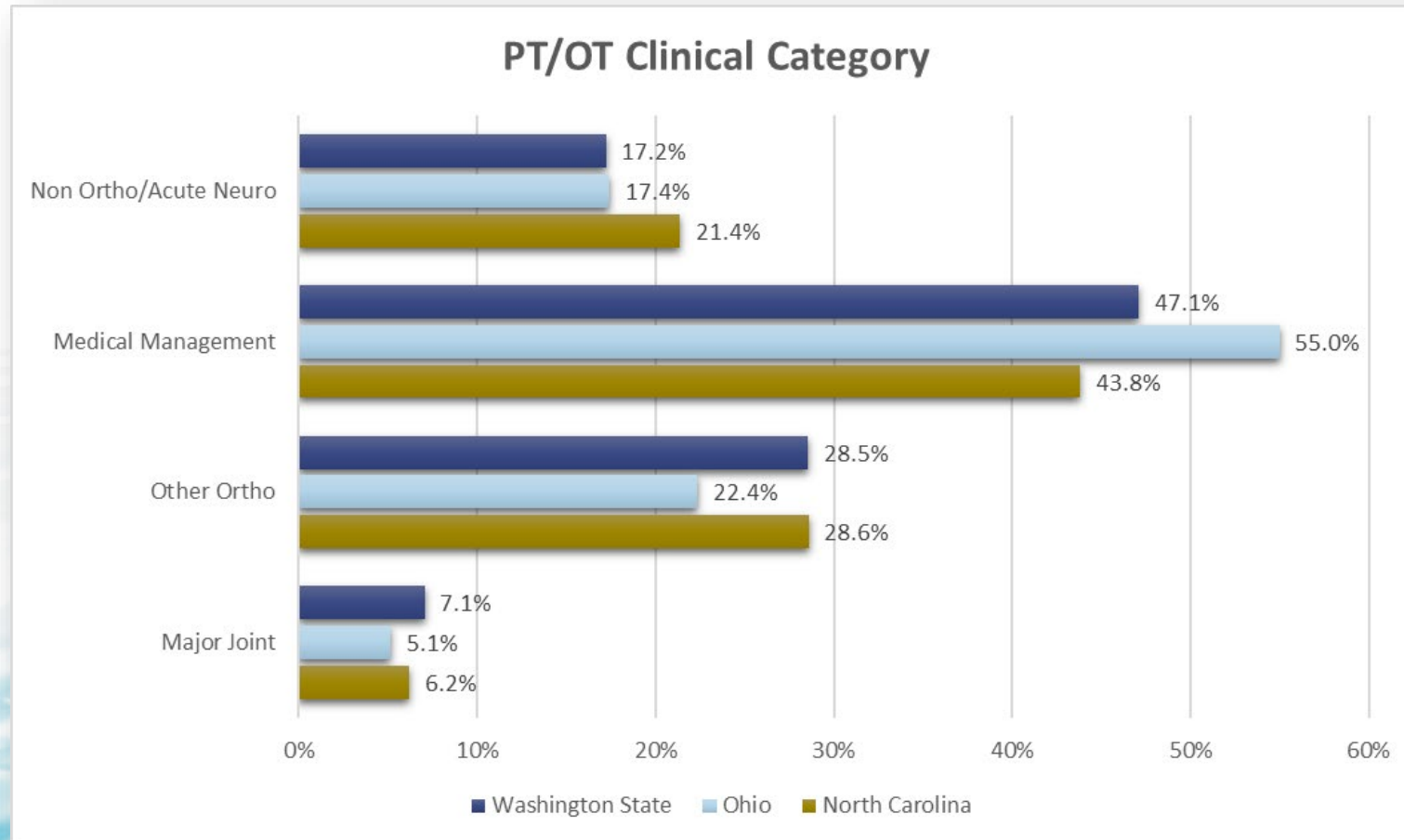
# CMS ResDAC Data Review & Trending

## PDPM Category Trends PT & OT:



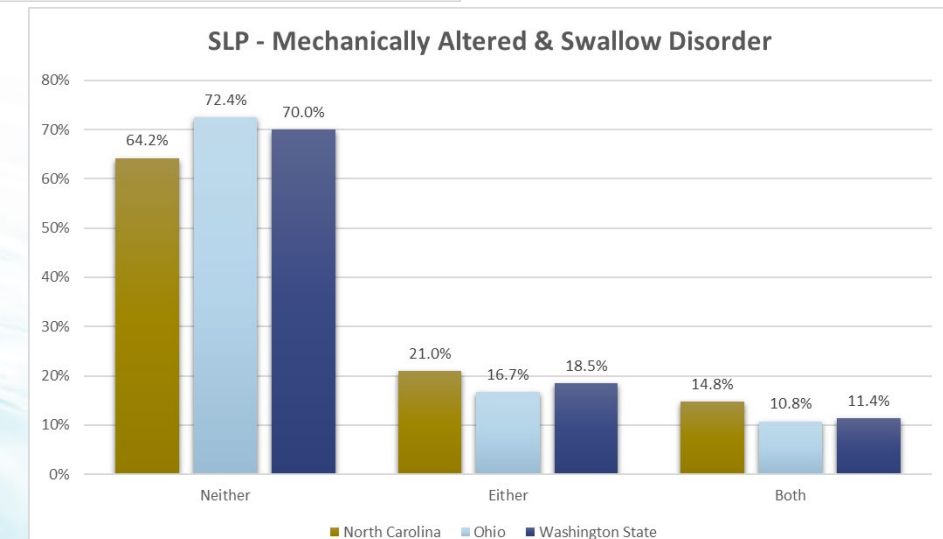
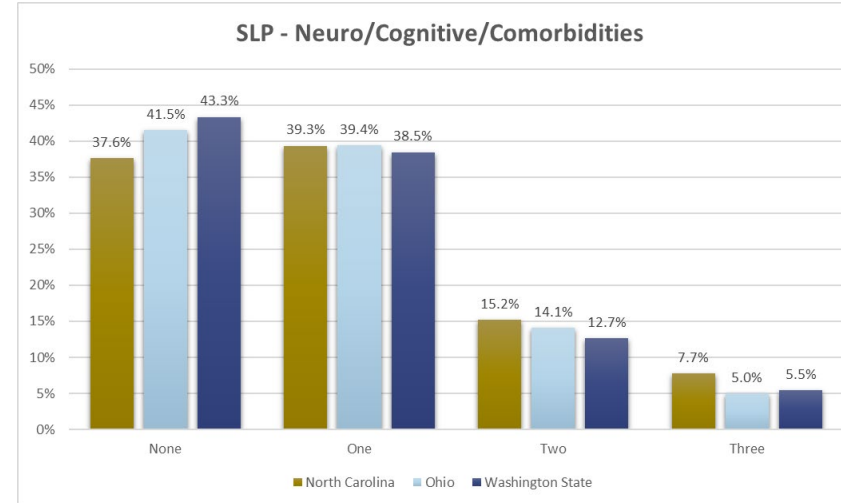
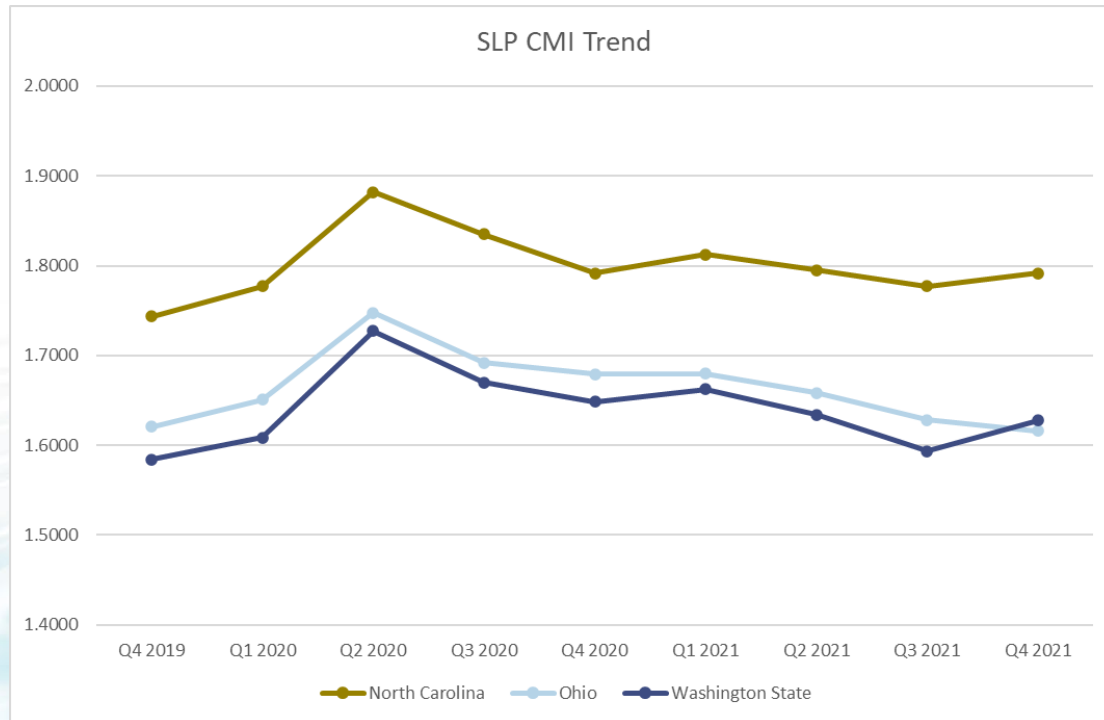
# CMS ResDAC Data Review & Trending

PDPM Category Trends PT & OT:

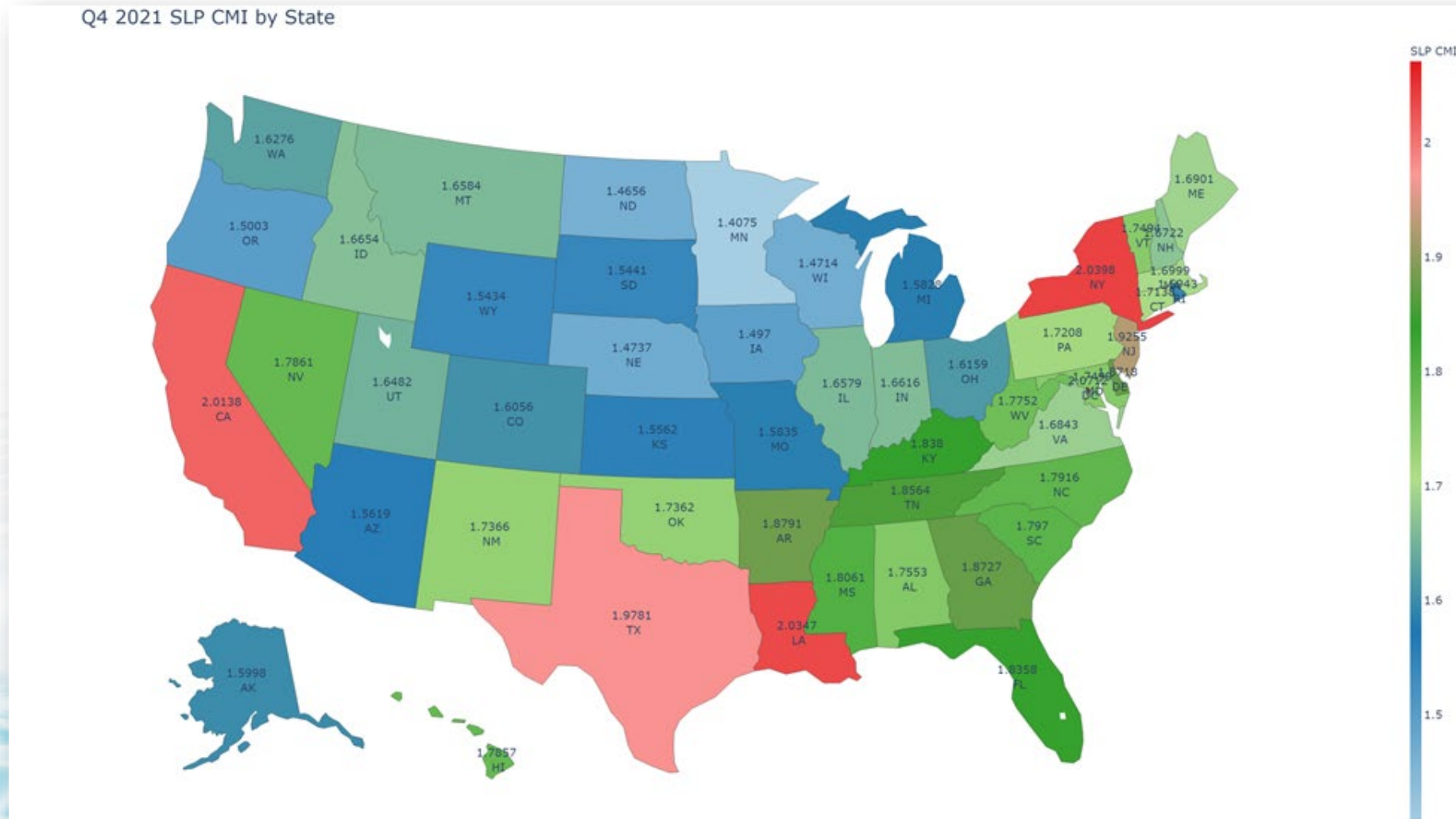


# CMS ResDAC Data Review & Trending

## PDPM Category Trends SLP:



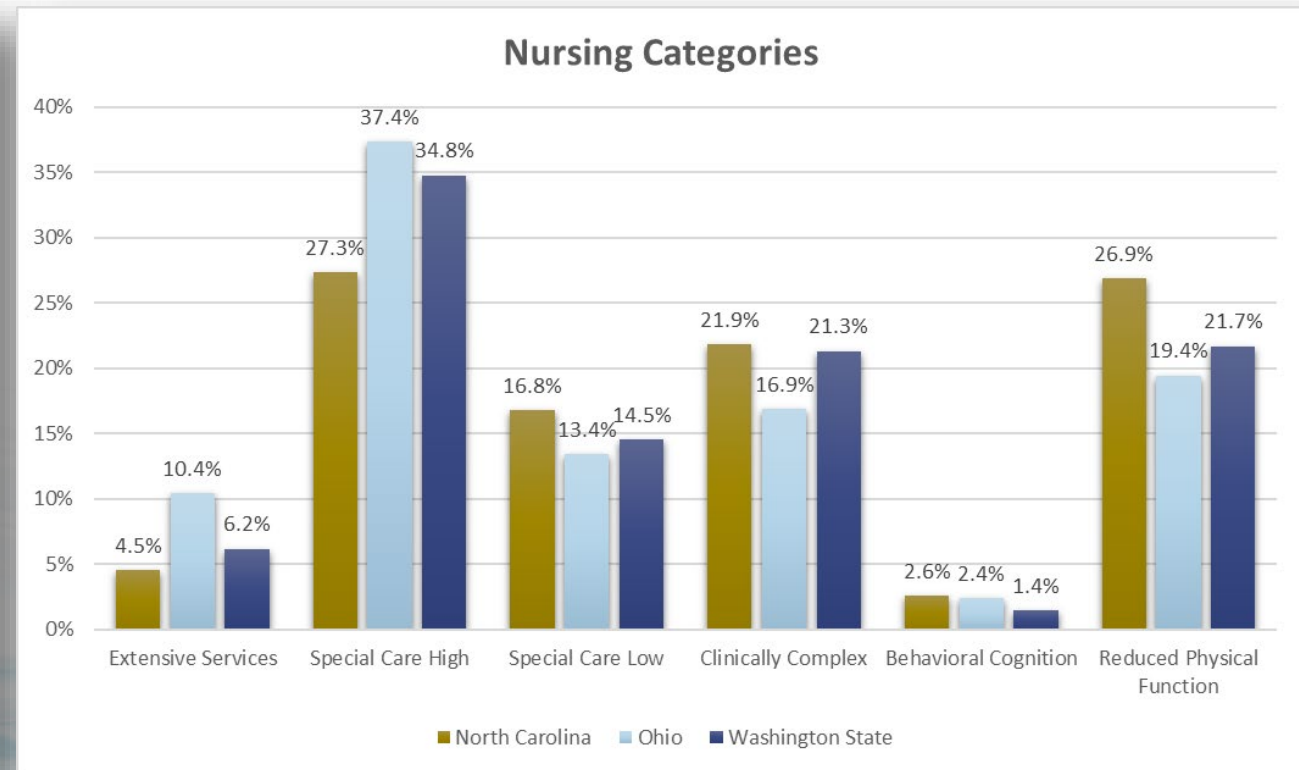
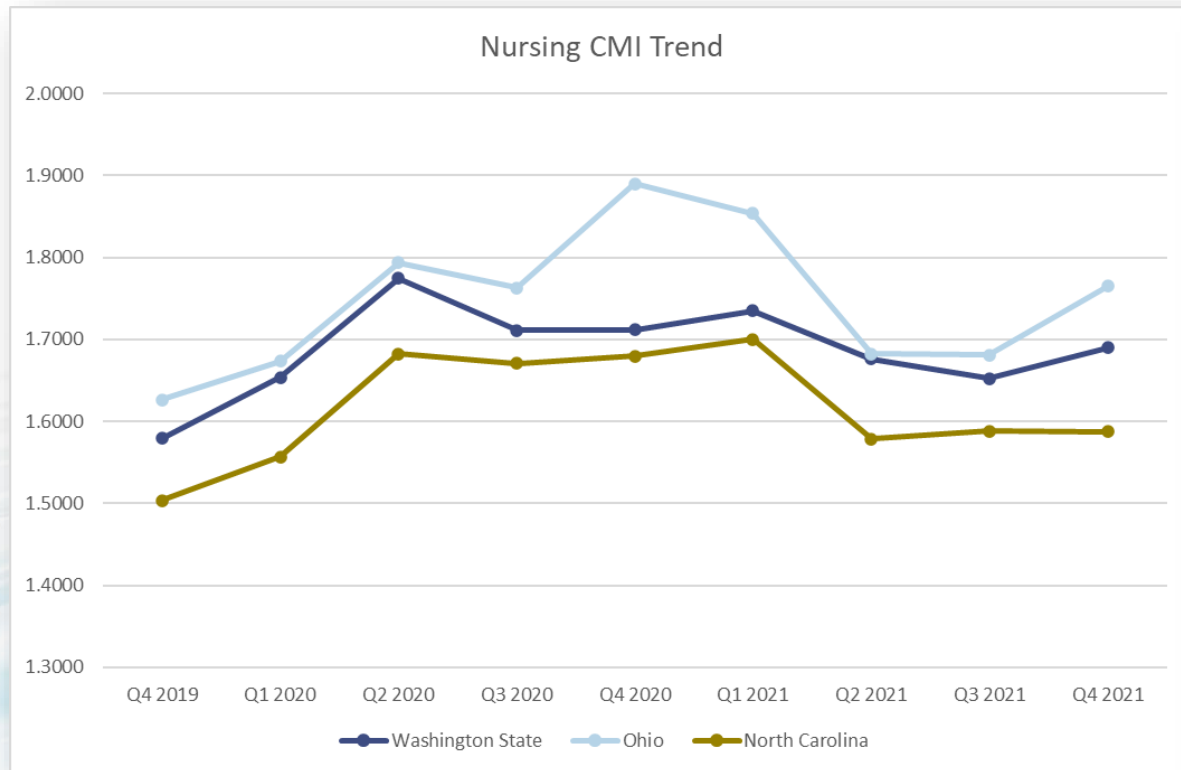
# CMS ResDAC Data Review & Trending





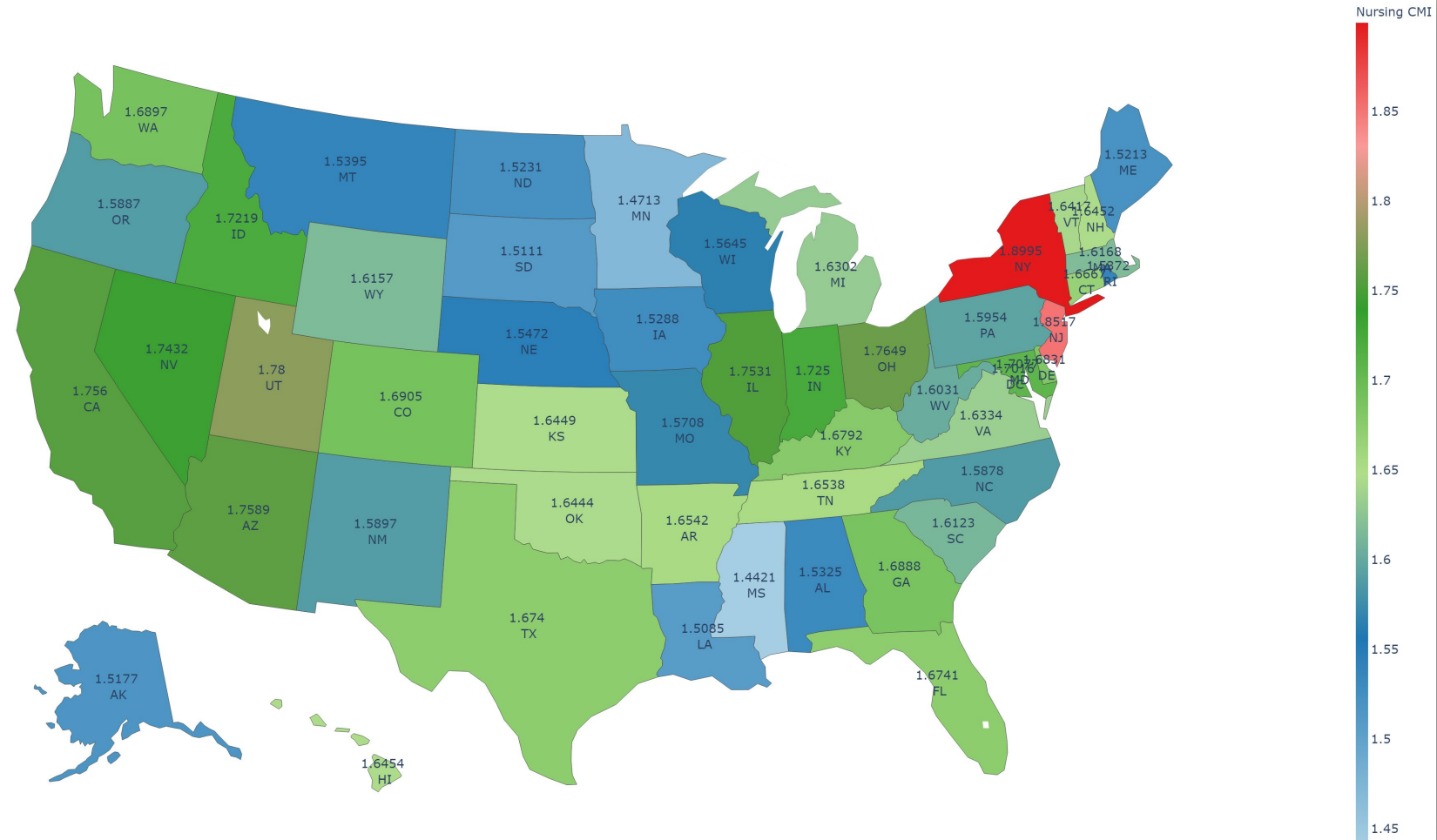
# CMS ResDAC Data Review & Trending

## PDPM Category Trends Nursing:



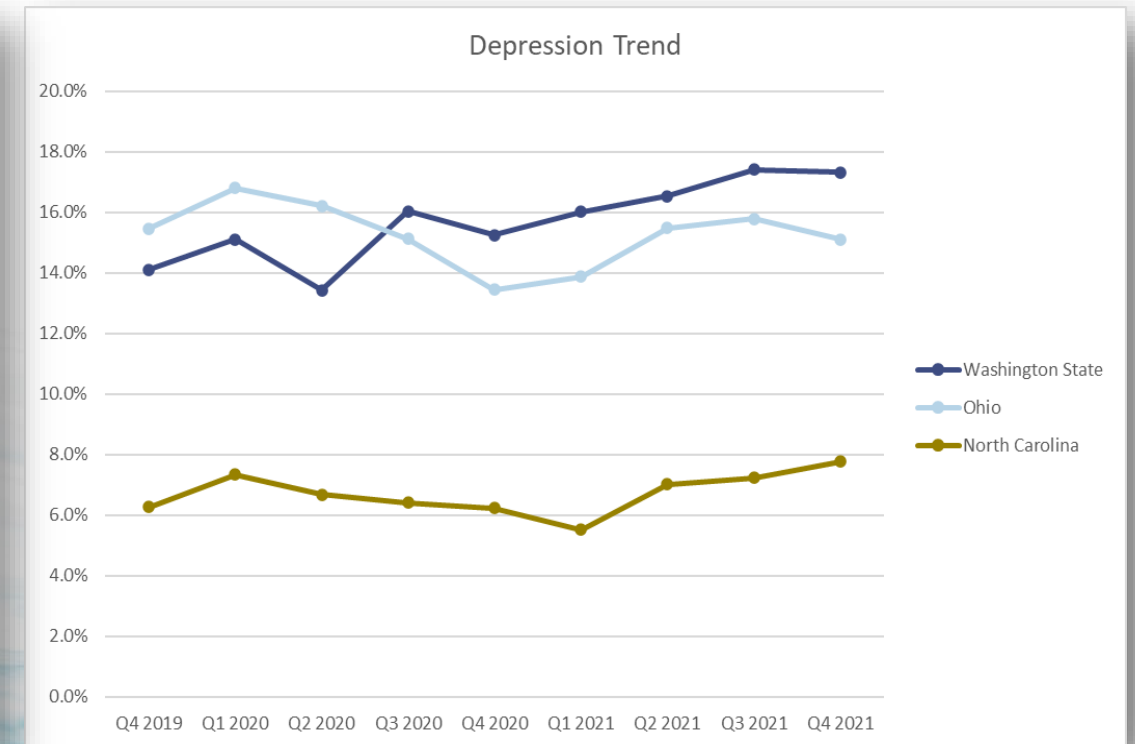
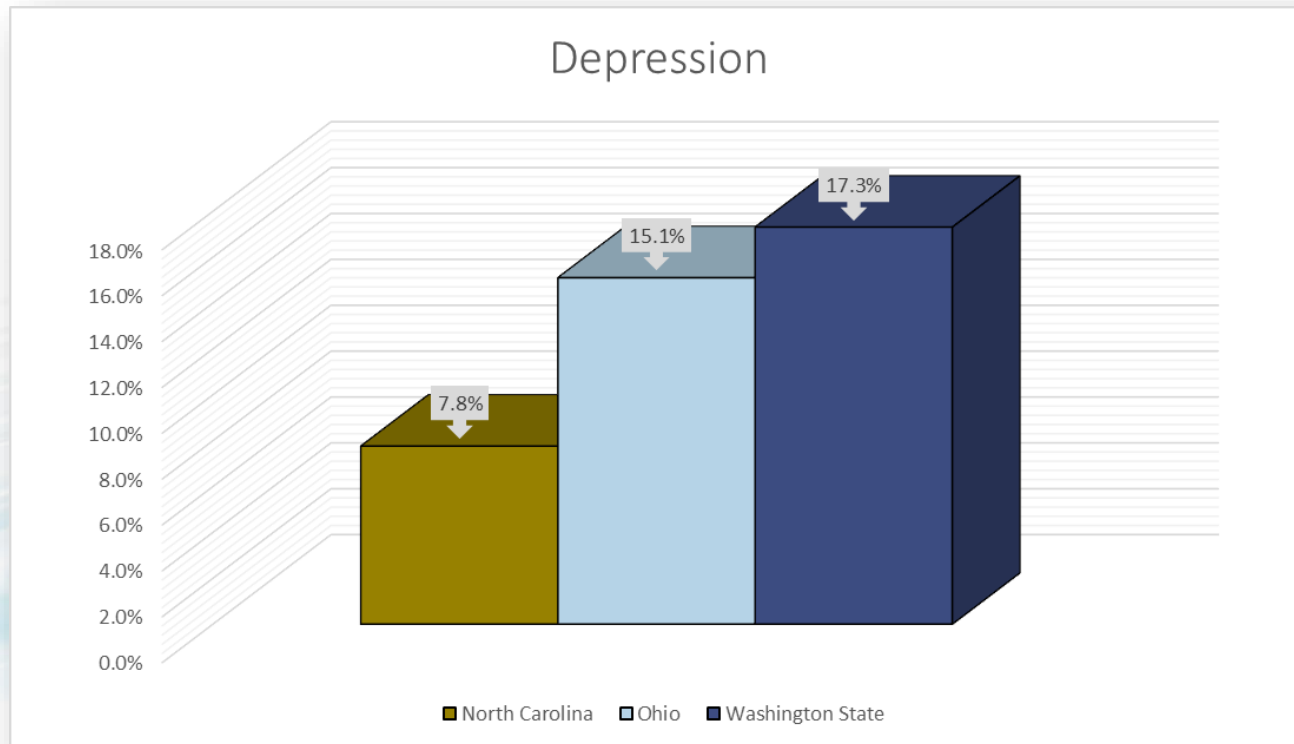
# CMS ResDAC Data Review & Trending

Q4 2021 Nursing CMI by State



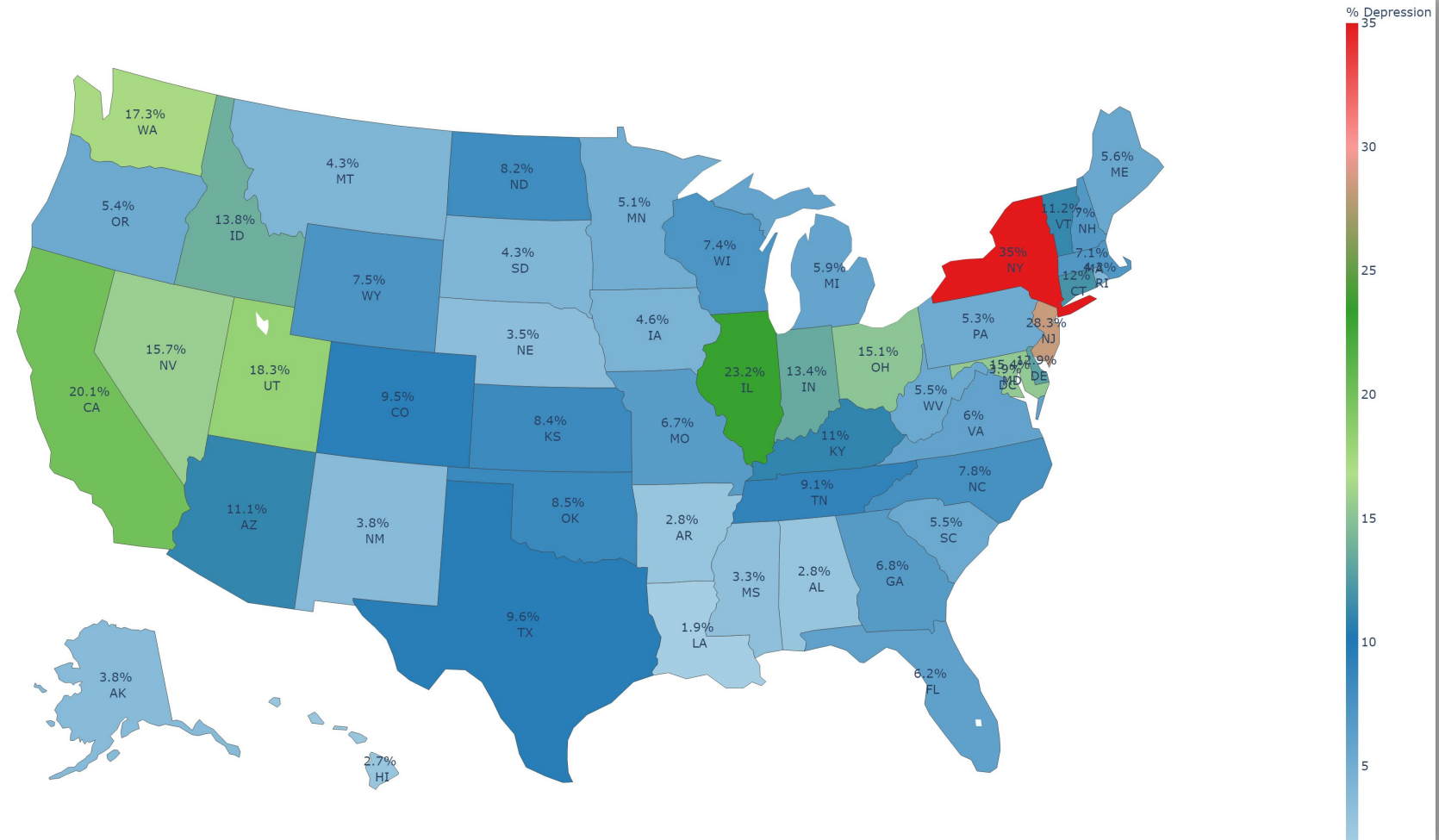
# CMS ResDAC Data Review & Trending

## PDPM Category Trends Depression:



# CMS ResDAC Data Review & Trending

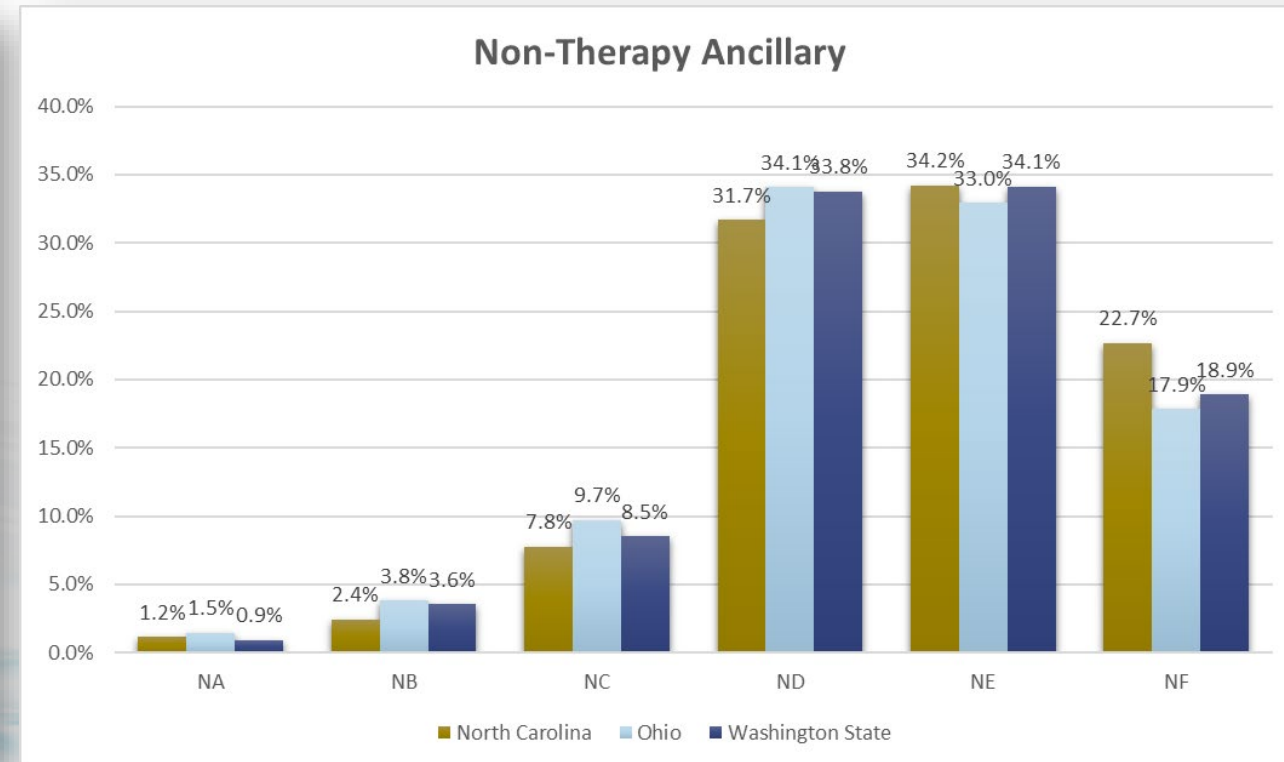
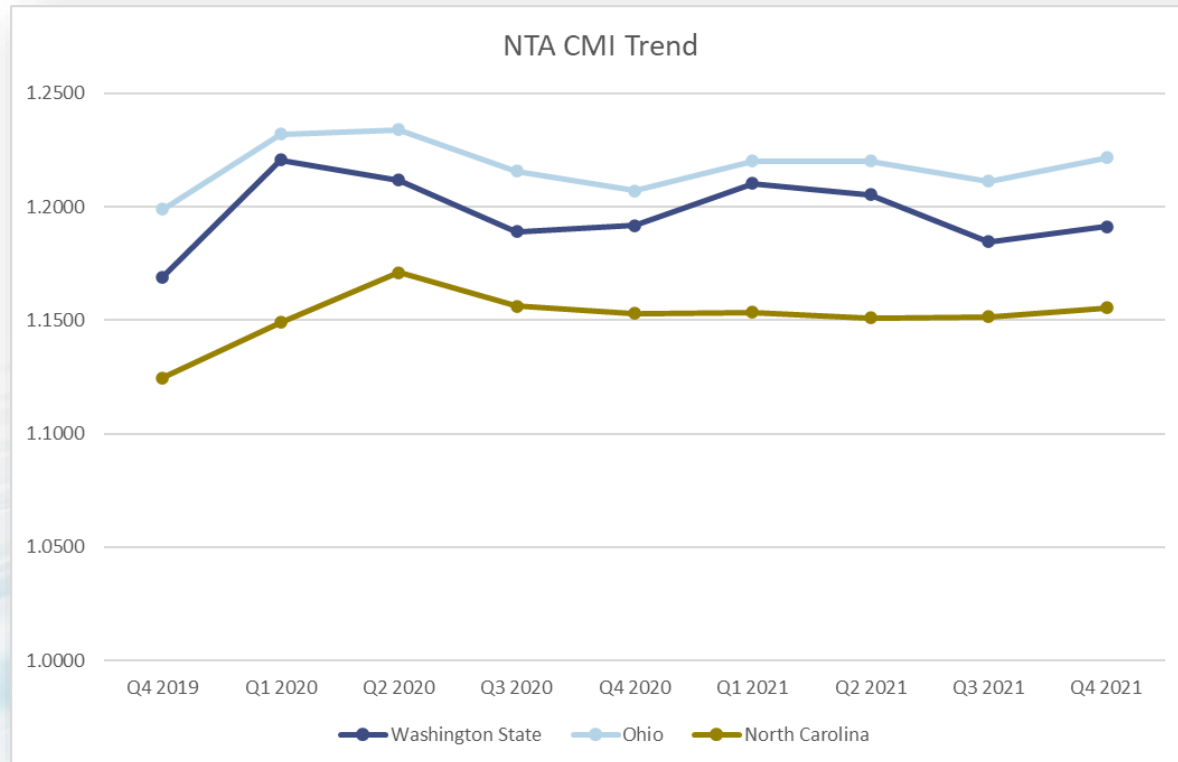
Q4 2021 % Depression by State



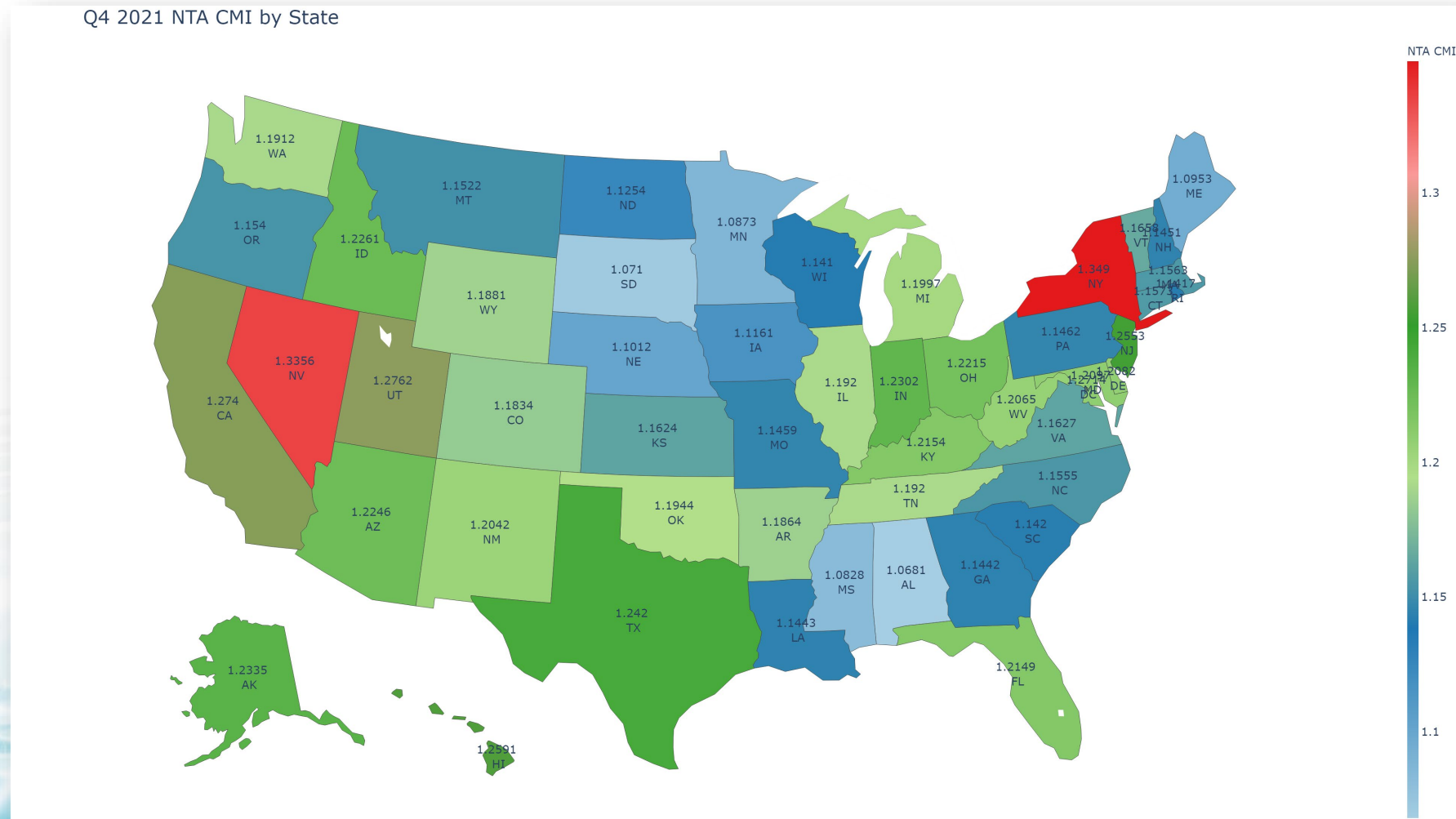


# CMS ResDAC Data Review & Trending

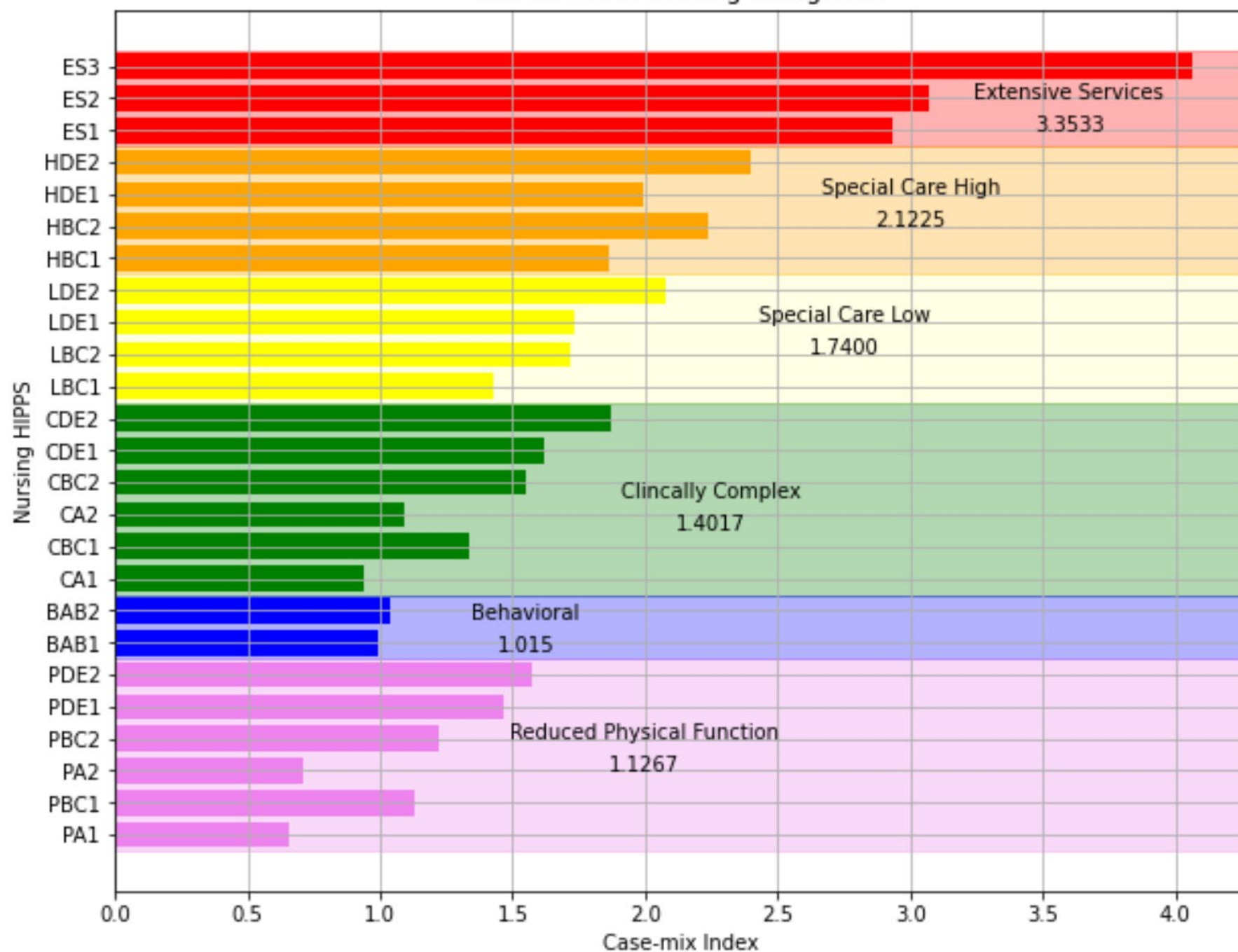
## PDPM Category Trends NTA:



# CMS ResDAC Data Review & Trending



CMI for PDPM Nursing Categories



# Average Rate Change for Nursing Categories

To:

From:	Reduced Physical Function	Clinically Complex	Special Care Low	Special Care High	Extensive Services
Behavioral	\$8.12	\$28.13	\$52.74	\$80.57	\$170.12
Reduced Physical Function		\$20.01	\$44.62	\$72.45	\$161.99
Clinically Complex			\$24.61	\$52.44	\$141.99
Special Care Low				\$27.83	\$117.37
Special Care High					\$89.54

# Depression

From	To	From	To	Differen ce
CA1	CA2	\$ 84.90	\$ 98.45	\$ 13.55
CBC1	CBC2	\$ 121.03	\$ 139.99	\$ 18.97
CDE1	CDE2	\$ 146.32	\$ 168.89	\$ 22.58
LBC1	LBC2	\$ 129.15	\$ 155.35	\$ 26.19
LDE1	LDE2	\$ 156.25	\$ 187.86	\$ 31.61
HBC1	HBC2	\$ 167.99	\$ 202.31	\$ 34.32
HDE1	HDE2	\$ 179.73	\$ 216.76	\$ 37.03
Average >>				\$ 26.32



# QUESTIONS?

Joe C. Eaton

Chief Strategist  
Broad River Rehab



[jeaton@broadriverrehab.com](mailto:jeaton@broadriverrehab.com)

704-918-5241



Joel VanEaton  
EVP of PAC Regulatory  
Affairs and Education



[jvaneaton@broadriverrehab.com](mailto:jvaneaton@broadriverrehab.com)

423-262-7625



# Find Out More

**Tricia Wood:** Vice President, Business Development (Southern and Midwestern US)

[twood@broadriverrehab.com](mailto:twood@broadriverrehab.com)

(919) 844-4800

**Jeff Moyers:** Vice President, Business Development (Southern and Western US)

[jmoyers@broadriverrehab.com](mailto:jmoyers@broadriverrehab.com)

(828) 319-9618

Sign up for our Blog [www.broadriverrehab.com](http://www.broadriverrehab.com)

Ask an Expert <https://www.broadriverrehab.com/expert/>

[Broad River Rehab Reflections](#) are the third Thursday of each month. In August we will discuss the FY 2023 SNF PPS Final Rule